

ALUMINUM SIDE CHAIR 10-HIGH SERIES

BRAVO
Model # HC-808



Overall Height	35.6"	Stacks	10 High
Overall Width	18"	Seat Height	18"
Overall Depth	22"	Seat Width	15.75"
Arm Height	N/A	Seat Depth	17.5"
Weight	16 Lbs.	C.O.M. Seat/Back	1 yd (0.5 / 0.5)

Standard Features

- Includes side stack bars for added support
- Completely welded aluminum alloy square tubing
- No exposed fasteners
- 12 Year Warranty
- Metal self leveling bootied swivel glides
- Meets CAL TB 117 fire rating
- Optional Flex Back and Webbed Seating
- Optional Ganging
- Leg on leg stacking with 10 stack bumpers
- Optional Lumbar Support

Description

Introduce a modern look with the Bravo design. A square back gives this versatile chair a contemporary feel. With a full width top hand grip, a optional flex back and webbed seat, these are just a few of the features your customer can use to personalize their chair. The bottom crumb hole facilitates an easy cleaning and makes this design a visually pleasing addition to any dining space.



Visit Us Online
www.shevchair.com

SHEV
 CHAIR

Manufacturers of Contract Hotel Furnishings
 4800 W. Roosevelt Road, STE 201 - Chicago, IL 60644
 OFFICE: (888) 532-3910 FAX: (773) 261-2808
 Email: SALES@SHEVCHAIR.COM

BRAVO

Model # HC-808

Shown with
Premium Option
Endo-Flex Back



Optional
Welded Ganging



Standard Dual Umbrella
Metal or Nylon
Booted Swivel Glides



Premium Option
Webbed Seat



Frame Tubing Options

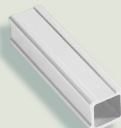
#09 FLUTE



#03 FLAT



#06 QUAD



#08 CONTOUR

